

GOVT. OF ODISHA  
DEPARTMENT OF HIGHER EDUCATION

Letter No. 43085 //Dt. 08.08.25  
HE-MC-MISC-0016-2025

From,

**Shri Kaliprasanna Mahapatra, IAS**  
Director, Higher Education  
Odisha, Bhubaneswar

To,

**Vice Chancellors,**  
**All State Public Universities**

**Principals,**  
**All Government and Non-Government Aided Colleges**

**Sub:** Establishment of **Shaktishree Empowerment Cell** and selection of **Shaktishree Saathi** (peer leader)

Madam/ Sir,

The Department of Higher Education, Government of Odisha, has launched **Shaktishree**, a **transformative empowerment and self-defence programme** for all **undergraduate and postgraduate female students** across the state, which focusses on ensuring the **holistic safety of female students - physical, legal, mental & digital** while safeguarding higher education institution campuses across the state.

As part of this initiative, you are hereby instructed to:

1. **Establish a Shaktishree Empowerment Cell** in your institution.
2. **Select a peer leader as "Shaktishree Saathi"**.

**SHAKTISHREE EMPOWERMENT CELL:**

As part of the **Shaktishree initiative**, a **Shaktishree Empowerment Cell** shall be established as a permanent, round-the-year body in all higher education institutions across the state. This student-led cell aims to promote security, empowerment, and a safe environment for female students and staff.

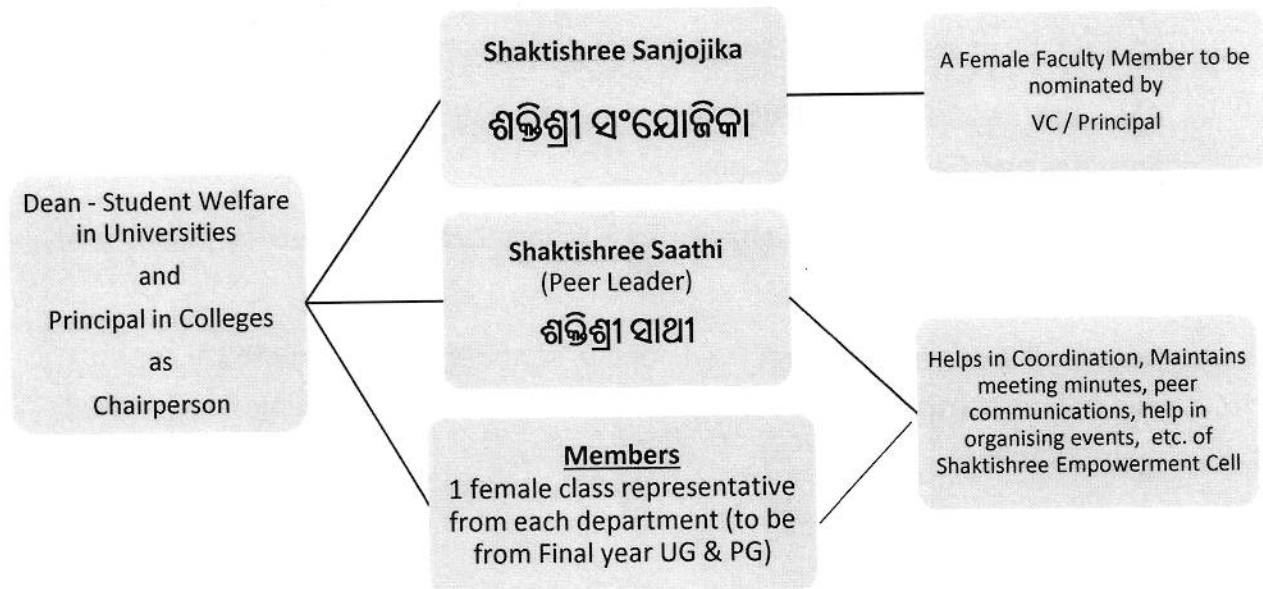
**Roles and Activities of Shaktishree Empowerment Cell:**

- ✓ Serve as **proactive agents of change** to promote gender equality and empowerment.
- ✓ Target **girl students in undergraduate and postgraduate courses** for participation.
- ✓ Conduct **6 Days Self-Defence Training Intensive Program**
- ✓ Organize workshops, seminars, and programs aligned with the **Year Round Thematic Shaktishree Calendar**
- ✓ **Conduct IEC activities and awareness campaigns** on women's safety and rights.
- ✓ Address issues related to **gender-based violence** and advocate for safety measures.
- ✓ Conduct **weekly practice sessions** including physical exercises, yoga, and meditation.
- ✓ **Include civil society** such as local volunteers, community leaders, health professionals etc. as resource persons.

### **Structure of the Shaktishree Empowerment Cell**

The **Shaktishree Empowerment Cell** will comprise the following members:

- **Shaktishree Sanjojika:** A female faculty member, nominated by HEI to provide guidance and monitor activities of the Cell. *(As already communicated to HEIs vide letter number 38844, dated 22.07.2025, issued by the Department of Higher Education)*
- **Shaktishree Saathi:** A peer leader among girl students.
  - **Role of Saathi:** Coordinate with Sanjojika and peers to conduct training sessions, conduct **Shaktishree Empowerment Cell** activities as per monthly calendar and organise workshops etc. The Saathi will be the link between Sanjojika and peer members and support in creating a safe, respectful environment within the institution.
- **Female Class Representatives:** One from each department (both UG and PG final year girl student), selected by the Head of the Department.
  - **Role:** They will assist Sanjojika and Saathi in conducting and operating the **Shaktishree Empowerment Cell's** activities smoothly throughout the year and help support in creating a safe, respectful environment within the institution.



### Selection Process for Shaktishree Saathi (Peer Leader)

To ensure a transparent and participatory selection process, the following procedure shall be adopted:

#### **Step 1: Constituting a Screening Committee:**

- The committee will include at least one faculty member from each stream, as decided by the Head of the Institution. (At least Two Female Faculty, If Available)
- The committee will evaluate willing female class representatives from each department aspiring to be the **Shaktishree Saathi (Peer Leader)**

#### **Step 2: Assessment & Evaluation:**

- The screening committee will assess candidates based on criteria such as leadership skills, communication, responsibility, empathy, problem-solving ability, and respect for diversity and suitability of the candidate.
- They shall ensure fairness, transparency, and active participation.

### Criteria for Selection for both female Class Representative and Saathi:

- **Voluntariness:** Willingness to be the proactive agent of change and with an open-minded attitude towards change, embracing new ideas, challenges, and opportunities.
- **Leadership Skills:** Demonstrated through participation in student activities, clubs, or previous roles.

- **Communication Skills:** Ability to communicate effectively, empathetically, and confidently as well as to listen actively and support fellow students.
- **Commitment & Responsibility:** Willingness to dedicate time and effort for peer activities and Cell responsibilities.
- **Problem-Solving Ability:** Capacity to support peers in resolving issues and guiding them appropriately.
- **Respect & Integrity:** Respect for diversity, confidentiality, and ethical conduct, as well as Respectful of diversity and capable of fostering an inclusive environment.

#### **Timeline to carry out the tasks:**

- The last date for the selection of Female Class Representative: **14<sup>th</sup> August 2025**
- The last date for the selection of Shaktishree Saathi: **20th August 2025**
- The last date for the Establishment of Shaktishree Empowerment Cell: **25<sup>th</sup> August 2025.**

You are requested to provide the details of the *Shaktishree Empowerment Cell*, *Shaktishree Sanjojika*, and *Shaktishree Saathi* of your HEI by filling out the **Google Form** through the **attached link** or by **scanning the provided QR code**.

#### **Link:**

[https://docs.google.com/forms/d/1npH0dFcyNgIZhIKhKvfbPIcNWgsdEqGacQy915cACJw/viewform?edit\\_requested=true](https://docs.google.com/forms/d/1npH0dFcyNgIZhIKhKvfbPIcNWgsdEqGacQy915cACJw/viewform?edit_requested=true)

#### **QR Code:**

*(To use a QR code on your phone, simply open your phone's camera app, point it at the QR code, and wait for the camera to recognize it. A notification or banner will appear, which you can tap to open the link or information associated with the code.)*



*(Scan this QR Code for Google Form on Shaktishree Empowerment Cell, Sanjojika & Saathi.)*

This is to be treated as '**Most Urgent**'.

Yours faithfully,

Director, Higher Education

Memo No. 43086 /HE, Dt. 08.08.25

Copy forwarded to the P.S to Commissioner-cum-Secretary, Higher Education Department for kind information of Commissioner-cum-Secretary.

Director, Higher Education

Memo No. 43087 /HE, Dt. 08.08.25

Copy forwarded to the section concerned for kind information.

Director, Higher Education